

结构特点 Design features

- 内装、单端面、多弹簧、平衡型、螺钉传动结构，任意旋向，弹性元件不与介质接触，抗阻塞能力强。
- Internally mounted, single face, multiplespring, balanced structure, driven by set screw and spina, any rotation direction, Spring no-touch to media, has a stronger antiblocking condition.

材料 Materials(to DIN24960)

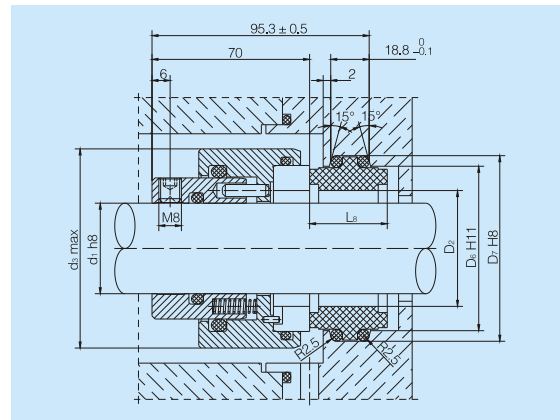
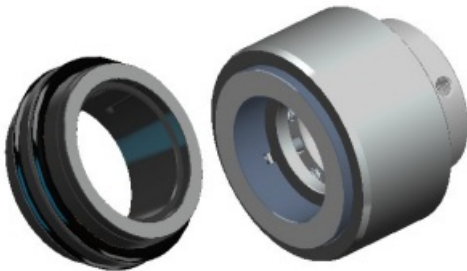
- 旋转环 Rotary Ring: Q1、Q2、U1、U2
- 静止环 Stationary Ring: B1
- 辅助密封 Auxiliary Seal: P、E、V、M1
- 弹簧及其他结构件材料 Spring and Other Parts: F、G

适用范围 Operatinglimits

- 压力 Pressure: $\leq 4.0\text{MPa}$
- 温度 Temperature: $-20\sim 150^{\circ}\text{C}$
- 线速度 Speeds: $\leq 20\text{m/sec}$
- 粘度 Viscosity: $\leq 1.0\text{Pa}\cdot\text{s}(1000\text{cp})$ 软对硬(Soft VS Hard)
 $\leq 3.5\text{Pa}\cdot\text{s}(3500\text{cp})$ 硬对硬(Hard VS Hard)

介质 Medium

油类、水、盐、有机溶剂及其它弱腐蚀性溶液。
Oil, water, salt, solvents and other weak corrosive fluid.



型号Model	d1	D2	d3	D6	D7
CN HGH-50	50	60	95	80.5	89.6
CN HGH-55	55	65	100	85.5	94.6
CN HGH-60	60	70	105	90.5	99.6
CN HGH-65	65	75	110	95.5	104.6
CN HGH-70	70	80	115	100.5	109.6
CN HGH-75	75	85	120	105.5	114.6
CN HGH-80	80	90	125	110.5	119.6
CN HGH-85	85	95	130	115.5	124.6
CN HGH-90	90	100	135	120.5	129.6
CN HGH-95	95	105	140	125.5	134.6
CN HGH-100	100	110	145	130.5	139.6